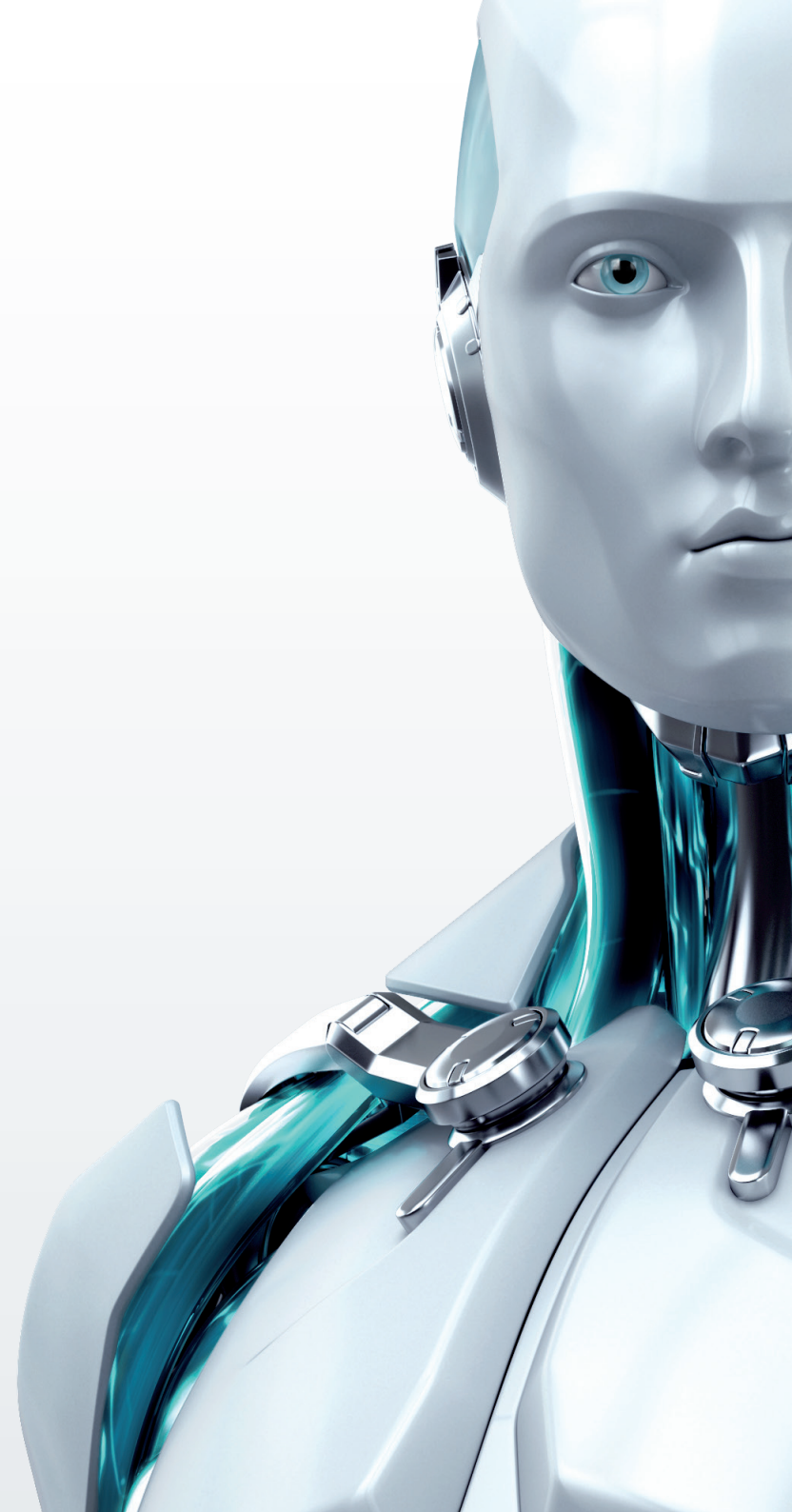


ESET ENDPOINT SOLUTIONS

System Requirements Overview



www.eset.co.uk



System Requirements Overview

SUPPORTED OPERATING SYSTEMS:		PRODUCT SPECIFIC SUPPORT
ESET SOLUTIONS RUNNING ON MICROSOFT (MS) PLATFORMS		
ESET Endpoint Antivirus	Microsoft Windows 8, 7, Vista, XP, 2000	
ESET Endpoint Security	Microsoft Windows 8, 7, Vista, XP, 2000	
ESET File Security for Microsoft Windows Server	Windows Server 2012, 2008 R2, 2008, 2003, 2000 Windows Small Business Server 2011, 2008, 2003 R2, 2003	
ESET File Security for Microsoft Windows Server Core	Windows Server Core 2012, 2008 R2, 2008	
ESET Mail Security for Microsoft Exchange Server	Windows Server 2012, 2008 R2, 2008, 2003, 2000 Windows Small Business Server 2011, 2008, 2003	Microsoft Exchange Server 2013, 2010 (SP1, SP2, SP3), 2007 (SP1, SP2, SP3), 2003 (SP1, SP2), 2000 (SP1, SP2, SP3), 5.5 (SP3, SP4)
ESET Mail Security for IBM Lotus Domino	Windows Server 2008 R2, 2008, 2003, 2000	IBM Lotus Domino 8.x.x, 7.x.x, 6.5.x
ESET Security for Microsoft SharePoint Server	Microsoft Windows Server 2012, 2008 R2, 2008, 2003 Microsoft Small Business Server 2011, 2008, 2003 R2, 2003	SharePoint Services 3.0 Microsoft SharePoint Server 2013, 2010, 2007 Microsoft SharePoint Foundation 2010
ESET NOD32 Antivirus Business Edition for Kerio Connect	Windows 2000 or higher; Kerio Connect 7.0 to 7.5.x; Kerio Mail Server 6.7.x or higher	ESET NOD32 Antivirus Business Edition 3.0, 4.0, 4.2; ESET Endpoint Antivirus and ESET File Security for Microsoft Windows Server
ESET NOD32 Antivirus Business Edition for Kerio Control	Windows 2000 or higher; Kerio Control 7.0 to 7.4.x; Kerio Winroute Firewall 6.6.x or higher	ESET NOD32 Antivirus Business Edition 3.0, 4.0, 4.2; ESET Endpoint Antivirus and ESET File Security for Microsoft Windows Server
ESET Gateway Security for Microsoft Forefront Threat Management Gateway	Windows Server 2008 R2, 2008, 2003	Microsoft ISA Server 2006 Standard/Enterprise: Windows Server 2003 R2, 2003 SP1 Microsoft Forefront TMG Standard/Enterprise: Windows Server 2008 R2, 2008 SP2
ESET Remote Administrator - Console	Windows 8, 7, Vista, XP, 2000; Windows Server 2012, 2008 R2, 2008, 2003, 2000	
ESET Remote Administrator - Server	Windows 8, 7, Vista, XP, 2000; Windows Server 2012, 2008 R2, 2008, 2003, 2000	Database Support: MySQL 5.0+, ORACLE 9i+, MSSQL 2005+
ESET Secure Authentication	Windows Server 2012, 2008 R2, 2008, 2003 R2, 2003	Android 2.1 or higher; Windows Phone 7 or higher; Windows Mobile 6; BlackBerry 4.3 to 7.1; Symbian (all supporting J2ME); All J2ME enabled phones
ESET SOLUTIONS RUNNING ON UNIX/LINUX PLATFORMS		
ESET NOD32 Antivirus Business Edition for Mac OS X	Mac OS X 10.8.x (Mountain Lion), 10.7.x (Lion), 10.6.x (Snow Leopard), 10.5.x (Leopard) Processor Architecture: Intel® x86/x64	
ESET NOD32 Antivirus Business Edition for Linux Desktop	RedHat, Debian, Ubuntu, Suse, Fedora, Mandriva and majority of RPM and DEB package manager based distributions; Kernel 2.6 or higher; GNU C Library 2.3 or higher; GTK+ 2.6 or higher; LSB 3.1 compatibility recommended; GNOME2 or KDE 3	
ESET File Security for Linux/BSD/Solaris	Linux: Kernel 2.6.x, glibc 2.3.6 or higher, Dazuko kernel module 2.0.0 or higher (optional); FreeBSD: 9.x, 8.x, 7.x, 6.x; NetBSD: v4; Sun Solaris: v10	
ESET Mail Security for Linux/BSD/Solaris	Linux: Kernel 2.6.x; glibc 2.3.2 or higher; FreeBSD: 9.x, 8.x, 7.x, 6.x; NetBSD: v4; Sun Solaris: v10	
ESET NOD32 Antivirus Business Edition for Kerio Connect	Linux: Kernel 2.6.x, glibc 2.3.6 or higher; FreeBSD: 9.x, 8.x, 7.x, 6.x; NetBSD: v4.x; Sun Solaris: v10	Kerio Connect 7.0 to 7.5.x; Kerio Mail Server 6.1.2 or higher ESET Mail Security for Linux/BSD/Solaris - up to v3.0.22
ESET Gateway Security for Linux/BSD/Solaris	Linux: Kernel 2.6.x, glibc 2.3.6 or higher; FreeBSD: 9.x, 8.x, 7.x, 6.x; NetBSD: v4; Sun Solaris: v10	
ESET SOLUTIONS RUNNING ON ANDROID/WINDOWS MOBILE/SYMBIAN PLATFORMS		
ESET Mobile Security for Android	Android 2.0 or higher	5MB of Free RAM Touch Screen Resolution: Minimum 240 x 320px; Recommended 320 x 480px or higher
ESET Mobile Security Business Edition	Windows Mobile 6.5, 6.1, 6.0, 5.0 Symbian^3 (Nokia only); Symbian S60 3rd Edition, Feature Pack 1 or 2; 5th Edition	

* If not specified otherwise, all products support Intel®/AMD® x84/x64 processor architecture.

Copyright © 2012–2013 ESET, spol. s r. o. ESET, logo ESET, NOD32, ThreatSense, ThreatSense.Net and/or other mentioned products of ESET, spol. s r. o., are registered trademarks of ESET, spol. s r. o. Windows is a registered trademark of Microsoft Corporation in the United States and other countries. Other here mentioned companies or products might be registered trademarks of its proprietors. Produced according to quality standards of ISO 9001:2000.

PIONEER OF THE ANTIVIRUS INDUSTRY FOR 25 YEARS

