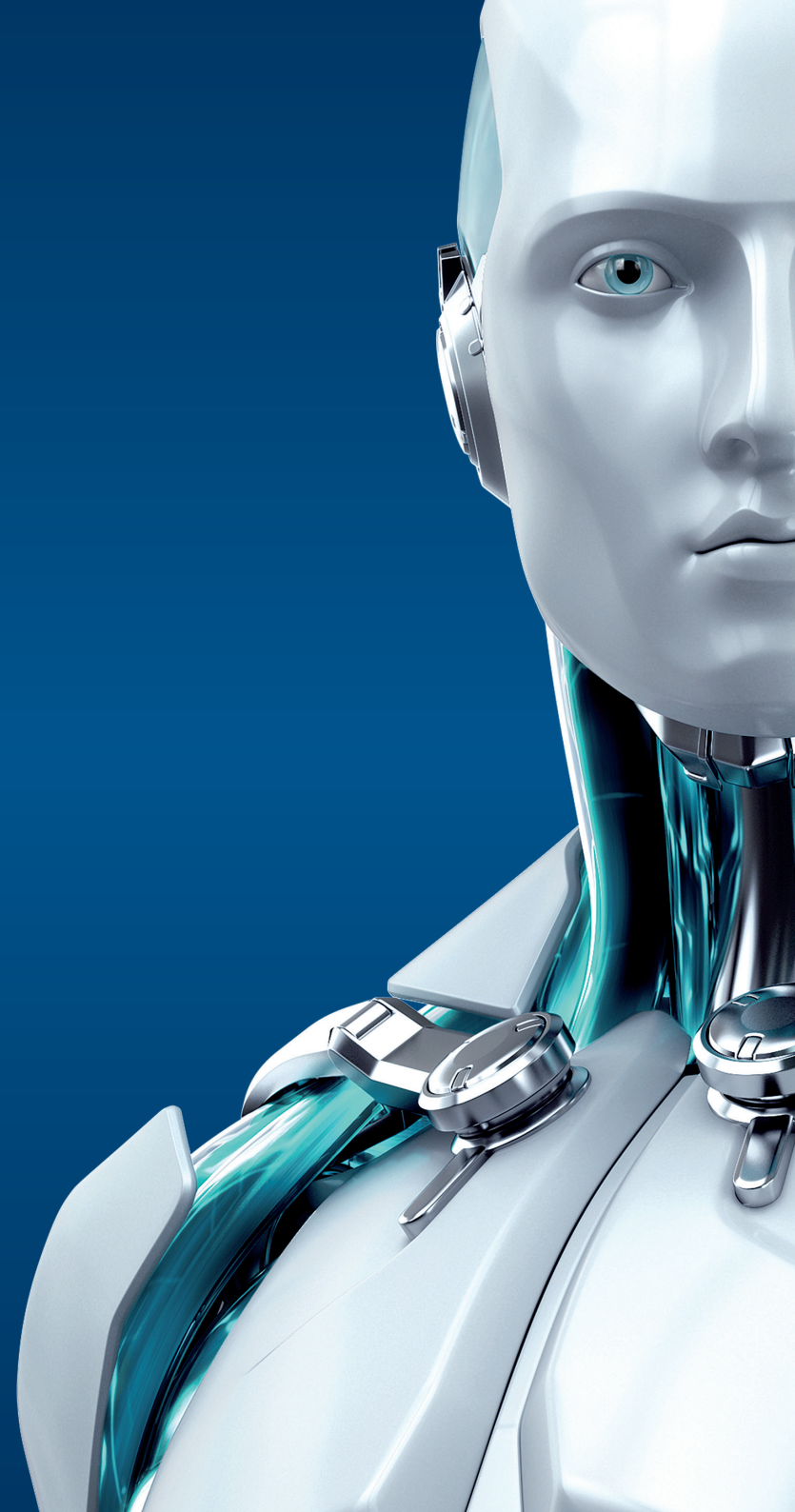




# ENDPOINT ANTIVIRUS

FOR WINDOWS

ENJOY SAFER TECHNOLOGY™





# ENDPOINT ANTIVIRUS FOR WINDOWS

ESET Endpoint Antivirus with award-winning ESET NOD32® technology delivers superior detection power for your business.

Its low system demands and virtualisation capability keep your system humming.

Keep the security of offline devices under control, and customise scanning and update options as you see fit. Control it all effortlessly with our all-new, user-friendly remote administrator tool.

## Endpoint Protection

---

<b>Antivirus and Antispyware</b>	Eliminates all types of threats, including viruses, rootkits, worms and spyware.  <b>Optional cloud-powered scanning:</b> Whitelisting of safe files based on file reputation database in the cloud for better detection and faster scanning. Only information about executable and archive files is sent to the cloud – such data are not personally attributable.
<b>Virtualisation Support</b>	ESET Shared Local Cache stores metadata about already scanned files within the virtual environment so same files are not scanned again resulting in boosted scan speed. ESET module updates and virus signatures database are stored outside of the default location, thus these don't have to be downloaded every time after the virtual machine is reverted to default snapshot.
<b>Host-Based Intrusion Prevention System (HIPS)</b>	Enables you to define rules for system registry, processes, applications and files. Provides tampering protection and detects threats based on system behavior.
<b>Exploit Blocker</b>	Strengthens security of applications on users' systems, such as web browsers, PDF readers, email client or MS office components, which are commonly exploited. Monitors process behaviors and looks for suspicious activities typical of exploits. Strengthens protection against targeted attacks and previously unknown exploits, i.e. zero-day attacks.
<b>Advanced Memory Scanner</b>	Monitors the behavior of malicious processes and scans them once they decloak in the memory. This allows for effective infection prevention even from heavily obfuscated malware.
<b>Cross-Platform Protection</b>	ESET security solutions for Windows are capable of detecting Mac OS threats and vice-versa, delivering better protection in multi-platform environments.

---

## Data Access Protection

---

<b>Anti-Phishing</b>	Protects end users from attempts by fake websites masquerading as trustworthy ones to acquire sensitive information such as usernames, passwords or banking and credit card details.
<b>Device Control</b>	Blocks unauthorised devices (CDs/DVDs and USBs) from your system. Enables you to create rules for user groups to comply with your company policies. Soft blocking notifies the end user his device is blocked and gives him the option to access the device, with activity logged.

---

## Scanning and Update Options

---

<b>Idle-State Scanner</b>	Aids system performance by performing full scan proactively when the computer is not in use. Helps speed up subsequent scans by populating the local cache.
<b>First Scan after Installation</b>	Provides the option to automatically run low priority on-demand scan 20 minutes after installation, assuring protection from the outset.
<b>Update Rollback</b>	Lets you revert to a previous version of protection modules and virus signature database. Allows you to freeze updates as desired - opt for temporary rollback or delay until manually changed.
<b>Postponed Updates</b>	Provides the option to download from three specialised update servers: pre-release (beta users), regular release (recommended for non-critical systems) and postponed release (recommended for company-critical systems - approximately 12 hours after regular release).
<b>Local Update Server</b>	Saves company bandwidth by downloading updates only once, to a local mirror server. Mobile workforce updates directly from ESET Update Server when the local mirror is not available. Secured (HTTPS) communication channel is supported.

---



FREE LOCAL  
TECHNICAL  
SUPPORT

Do More with the help of our specialists.  
On call to provide technical support when  
you need it.

## Usability

<b>RIP &amp; Replace</b>	Other security software is detected and uninstalled during installation of ESET Endpoint solutions. Supports both 32 and 64-bit systems.
<b>Customisable GUI Visibility</b>	Visibility of Graphical User Interface (GUI) to end user can be set to: Full, Minimal, Manual or Silent. Presence of ESET solution can be made completely invisible to end user, including no tray icon or notification windows. By hiding the GUI completely, the "egui.exe" process does not run at all, resulting in even lower system resource consumption by the ESET solution.
<b>ESET License Administrator</b>	Makes it possible to handle all licenses transparently, from one place via web browser. You can merge, delegate and manage all licenses centrally in real-time, even if you are not using ESET Remote Administrator.
<b>Touchscreen Support</b>	Supports touch screens and high-resolution displays. More padding for and complete rearrangement of GUI elements. Basic frequently used actions accessible from tray menu.
<b>Low System Demands</b>	Delivers proven protection while leaving more system resources for programs that end users regularly run. Can be deployed on older machines without the need for an upgrade, thereby extending hardware lifetime. Conserves battery life for laptops that are away from the office, using battery mode.
<b>Right-to-Left Language Support</b>	Native right-to-left language support (e.g. for Arabic) for optimum usability.
<b>Remote Management</b>	ESET Endpoint solutions are fully manageable via ESET Remote Administrator. Deploy, run tasks, set up policies, collect logs, and get notifications and an overall security overview of your network – all via a single web-based management console.

Copyright © 1992 – 2015 ESET, spol. s r. o. ESET, ESET logo, ESET android figure, NOD32, ESET Smart Security, SysInspector, ThreatSense, ThreatSense.Net, LiveGrid, LiveGrid logo and/or other mentioned products of ESET, spol. s r. o., are registered trademarks of ESET, spol. s r. o. Windows® is a trademark of the Microsoft group of companies. Other here mentioned companies or products might be registered trademarks of their proprietors. Produced according to quality standards of ISO 9001:2008.



### SPC International

Suite 2, 1st Floor, Beasley Court  
Warwick Place, Uxbridge  
UB8 1PE  
01895 203 120  
eset@spcint.com  
www.spcint.com

