

# Fascia XE 1500/3000



# Fascia XE 1500/3000

SPCWIN0686



Part number: SPCWIN0686  
Desc: Speaker grill (15)  
Price each:  
MOQ:  
Dimensions:  
OEM:

SPCWIN0687



Part number: SPCWIN0687  
Desc: LED Lighting unit (15)  
Price each:  
MOQ:  
Dimensions:  
OEM:

SPCWIN0688



Part number: SPCWIN0688  
Desc: Logo light cover (15)  
Price each:  
MOQ:  
Dimensions:  
OEM:

SPCWIN0689



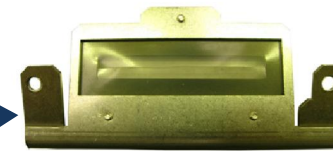
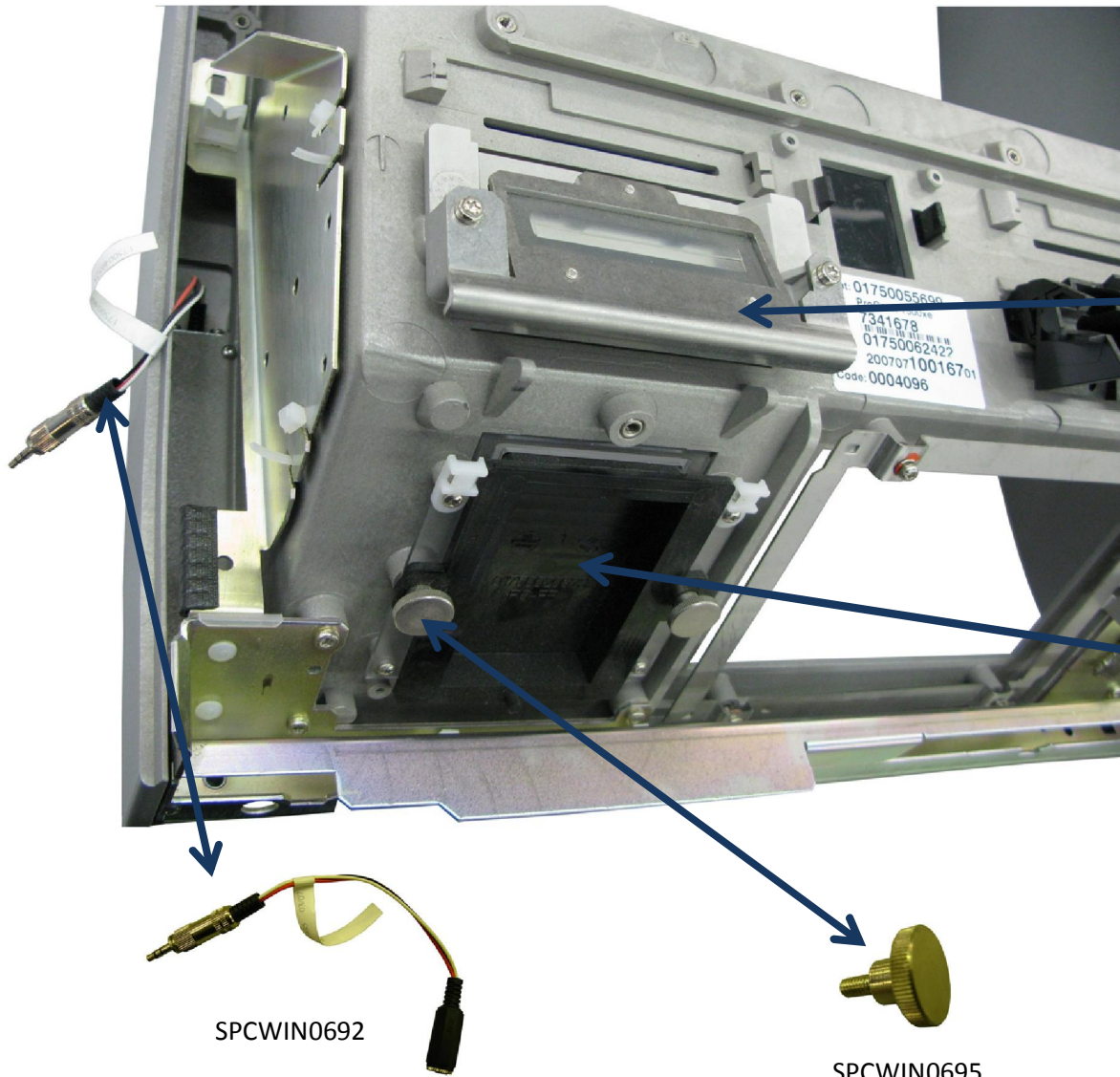
Part number: SPCWIN0689  
Desc: Camera window (15)  
Price each:  
MOQ:  
Dimensions:  
OEM:

SPCWIN0690



Part number: SPCWIN0690  
Desc: Motorised CHD throat (15)  
Price each:  
MOQ:  
Dimensions:  
OEM:

# Fascia XE 1500/3000



SPCWIN0693



SPCWIN0694



SPCWIN0692



SPCWIN0695

# Fascia XE 1500/3000

SPCWIN0693



Part number: SPCWIN0693  
Desc: Protective foil and bracket (15)  
Price each:  
MOQ:  
Dimensions:  
OEM:

SPCWIN0694



Part number: SPCWIN0694  
Desc: Card orientation holder (15)  
Price each:  
MOQ:  
Dimensions:  
OEM:

SPCWIN0695



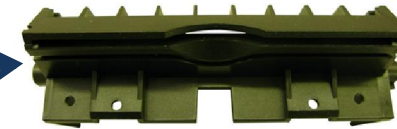
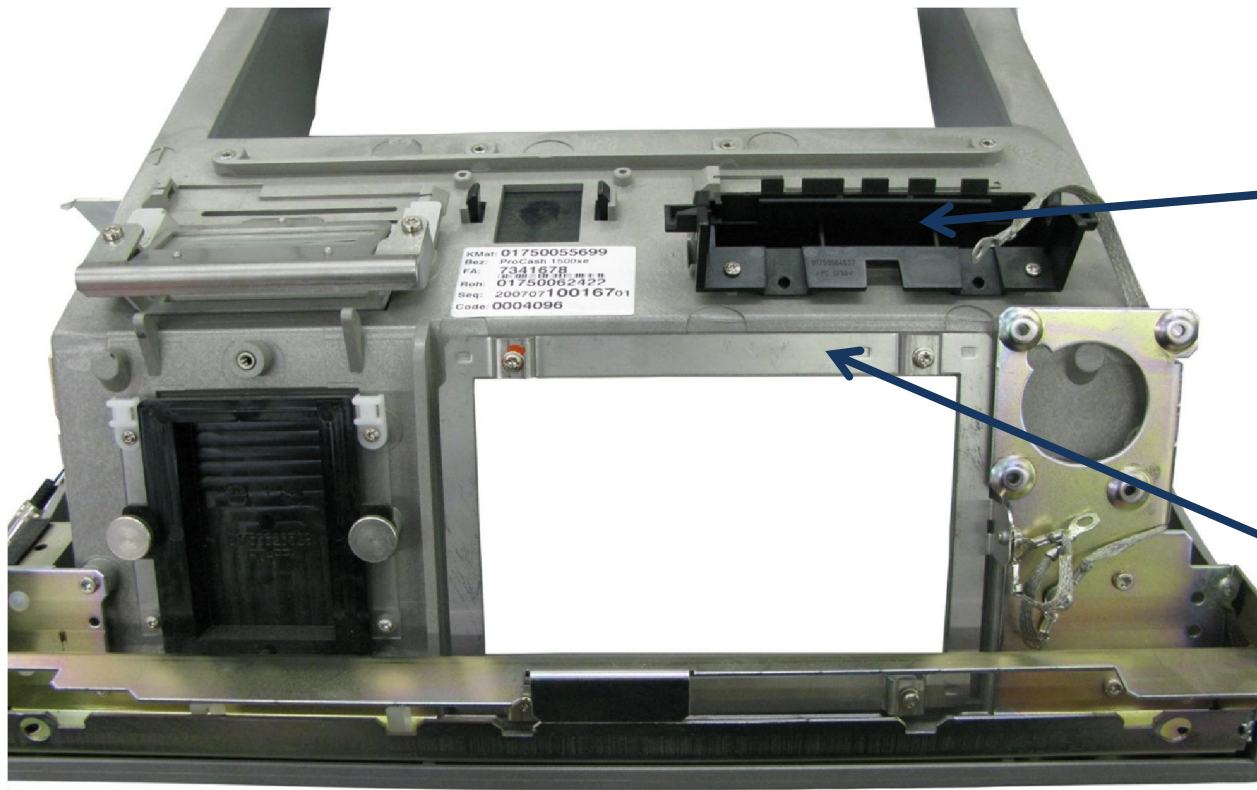
Part number: SPCWIN0695  
Desc: Thumb screw (15)  
Price each:  
MOQ:  
Dimensions:  
OEM:

SPCWIN0692



Part number: SPCWIN0692  
Desc: Audio jack (15)  
Price each:  
MOQ:  
Dimensions:  
OEM:

# Fascia XE 1500/3000



SPCWIN0696



SPCWIN0697

# Fascia XE 1500/3000

SPCWIN0696



Part number: SPCWIN0696  
Desc: Printer guide (15)  
Price each:  
MOQ:  
Dimensions:  
OEM:

SPCWIN0697



Part number: SPWIN0697  
Desc: EPP retaining bracket (15)  
Price each:  
MOQ:  
Dimensions:  
OEM:

# Fascia XE 1500/3000



# Fascia XE 1500/3000



Part number: SPCWIN0698  
Desc: Audio jack cover (15)  
Price each:  
MOQ:  
Dimensions:  
OEM:



Part number: SPCWIN0691  
Desc: Card orientation window (15)  
Price each:  
MOQ:  
Dimensions:  
OEM: